

725

ARTICULATED TRUCK



Engine Maximum Power
Operating Weight

255 kW (342 hp)¹
24 tonnes (26.5 tons) Rated Payload

¹ Meets U.S. EPA Tier 4 Final, either EU Stage V or EU Stage IV*, Japan 2014, and Korea Tier 4 Final emission standards.
*Stage IV engines comply with the transition provisions of the EU nonroad emission regulation.



The Cat® 725 raises the bar for operator efficiency in the toughest conditions. With about half the necessary operator input, improved comfort and performance features, the 725 line of articulated trucks will set a new pace for productivity and profit in your operation.

THE NEW CAT® 725

RAISING THE BAR



NEXT-GENERATION ARTICULATED TRUCKS

The new line of Cat articulated trucks featuring a world-class cab design was re-engineered using operator feedback from around the world. Enhancements include:

- + NEW CONTROLS
- + NEW MACHINE PROTECTION SYSTEMS
- + NEW OPERATOR COMFORT FEATURES
- + NEW WARNING ROLLOVER PROTECTION SYSTEM

Ready to help make your business stronger, Cat articulated trucks give you new ways to get the most work done at the lowest cost.

OPERATOR REQUIRES UP TO 50% LESS INPUT*

The Cat 725 is designed for easier operation and control, with a combined hoist/transmission lever that also incorporates the park brake.

INTERIOR SPACE INCREASED BY 20%*

Redesigned cab increases glass area with ample storage space to prevent clutter.

PRODUCTIVITY INCREASED UP TO 7%*

Experience 8% improved acceleration and 9% increased speed on grades, resulting in quicker haul cycles and enhanced productivity.

*All comparisons made to previous model

PILE UP THE SAVINGS

GENERATE **ADDITIONAL TONS PER HOUR** WITH QUICKER HAUL CYCLES.



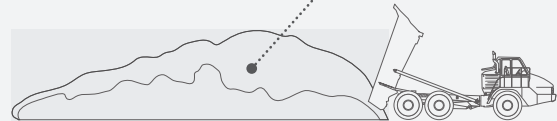
1 WEEK



1 MONTH



1 YEAR



5 YEARS

Illustration shows potential accumulation in tons per hour over time.





COMFORT AND CONTROL

Simplified operation with multi-function hoist/transmission lever, more interior space, improved visibility, and a cab that's four times quieter.



EMISSIONS

Meets emission standards for the U.S., Canada, EU, Korea, and Japan. Controls particulate matter with the standard Cat Clean Emissions Module (CEM) and exhaust aftertreatment package. Eco mode available to save up to 5% in fuel.



DURABILITY

Advanced suspension allows higher speed over rough terrain. Frames are robot-welded for maximum durability, and all structures and components are proven through experience and testing.



PERFORMANCE

Advanced Automatic Traction Control (AATC) delivers maximum traction and increased productivity. Improved acceleration and increased speed performance on grades is also achieved with 2F start.

DESIGNED FOR OPERATORS, BY OPERATORS

SAFETY

Cat Detect with stability assist gives the operator an audible and visual alert if the front or rear of the machine approaches an unsafe angle. Fully Automatic Retarder Control (ARC) controls speed when operating down grades.

CAB

World-class cab design with automatic climate controls, greater visibility, more storage, four times quieter cab, and 20% more interior space.

TRACTION

AATC is a terrain-based system which proactively applies differential locks to avoid wheel spin, protecting tires from unnecessary wear and increasing traction and efficiency. AATC proactively senses slope, grades, and acceleration rates.

FUEL

Next generation design has the ability to improve fuel economy. With one button, optional ECO mode can reduce fuel use up to 5%.

INSTRUMENTS

Well-lit gauges. Touchscreen for easy monitoring and adjustment of systems (with real-time load weights).

CONTROLS

New combined hoist/transmission lever incorporates park brake. Machine speed limiter and waiting brake can be selected from the lever.



A QUIET, SAFE WORKSPACE

BUILDS OPERATOR CONFIDENCE



VISIBILITY

- Redesigned cab with increased glass area improves rear-quarter visibility
- Cab-mounted mirrors for reduced vibration and improved visibility
- Integrated payload lights

ENVIRONMENT

- Quieter, more spacious cab
- Automatic climate control
- Ample storage in cab

OPERATION

- Simple, intuitive controls and displays
- Touchscreen for easy monitoring and control
- Sliding windows for better communication and ventilation

MAXIMIZING OPERATOR EFFICIENCY

IN THE TOUGHEST CONDITIONS

- + DURABLE SUSPENSION FOR GREATER SPEED OVER ROUGH TERRAIN
- + MACHINE PROTECTION SYSTEMS
- + OSCILLATING FRONT SUSPENSION FOR A SMOOTH RIDE
- + ROBOT-WELDED FRAMES FOR MAXIMUM DURABILITY
- + DIRECTIONAL SHIFT PROTECTION FOR POWER TRAIN
- + MACHINE WAKE UP
- + LOW-PROFILE EXHAUST STACK ELIMINATES THE NEED FOR REMOVAL TO TRANSPORT
- + RE-ENGINEERED CAB USING GLOBAL FEEDBACK FOR EASIER OPERATION
- + EASIER TO OPERATE – SUITED FOR A WIDE RANGE OF OPERATOR EXPERIENCE



CAT LINK TECHNOLOGY

TAKES THE GUESSWORK OUT OF MANAGING YOUR EQUIPMENT

CAT LINK telematics technology helps take the complexity out of managing your jobsites – by gathering data generated by your equipment, materials, and people and serving it up to you in customizable formats.



PRODUCT LINK™

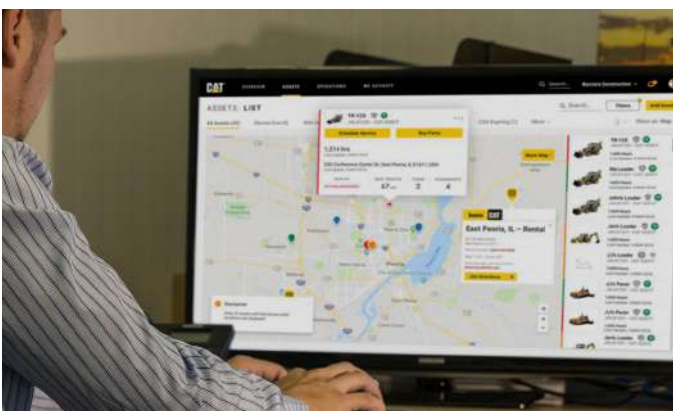
Product Link™ collects data automatically and accurately from your assets – any type and any brand. Information such as location, hours, fuel use, productivity, idle time, maintenance alerts, diagnostic codes, and machine health can be viewed online through web and mobile applications.



VISIONLINK

Access information anytime, anywhere with VisionLink® – and use it to make informed decisions that boost productivity, lower costs, simplify maintenance, and improve safety and security on your jobsite. With different subscription level options, your Cat dealer can help you configure exactly what you need to connect your fleet and manage your business without paying for extras you don't want. Subscriptions are available with cellular or satellite reporting (or both).

Caterpillar releases products, services, and technologies in each region at different time intervals. Please verify with your local Cat dealer for technology availability and specifications.



MY.CAT.COM

You can also access Caterpillar and Cat dealer information at my.cat.com. My.cat.com gives you access to PM schedules, parts and service records, warranty coverage and more – with a single login. Plus, you can link directly to your VisionLink account.

MAXIMIZE UPTIME AND REDUCE COSTS

SERVICEABILITY



LONG SERVICE INTERVALS

Oil change intervals, volumes, and the type of oil required will help lower maintenance costs and machine downtime.

EXTENDED LIFE COOLANT

Extended Life Coolant extends the change interval and improves component life by reducing corrosion.

LUBRICATION POINTS

Lubrication points are grouped in the hitch area for ease of servicing. Universal joints are lubed for life, eliminating any maintenance. An autolube system is also optional and now includes alerts via Product Link for low grease levels.

ELECTRICAL SERVICE CENTER

Located inside the cab, the electrical service center provides a power port, diagnostic connector and Cat Data Link connector.

RADIATOR

The radiator package is located behind the cab, which provides protection from frontal impacts and offers easy access to the inlet and outlet sides of the radiator.

SERVICE ACCESS

The cab tilts to the side to provide easy access underneath, which simplifies access to the transmission, drive shafts and hydraulic pumps. Machine electrical and hydraulic interfaces are located on the external right-hand side of the cab behind a removable body panel, providing easy access.

SERVICE POINTS

Service points are mounted on the left-hand side of the engine under the electrically raised hood:

- + ENGINE DIPSTICK AND FILL CAP
- + TRANSMISSION DIPSTICK AND FILL CAP
- + AIR CLEANER, FUEL WATER SEPARATOR AND FUEL FILTERS
- + ELECTRICALLY OPERATED FUEL-PRIMING PUMP
- + COOLANT LEVEL INDICATOR AND FILL CAP ARE OUTSIDE THE CAB

TECHNICAL SPECIFICATIONS

See cat.com for complete specifications.

ENGINE		
Engine Model	Cat C9.3	
Gross Power (SAE J1995:2014)	255 kW	342 hp
Net Power (SAE J1349:2011)	249 kW	334 hp
Engine Power (ISO 14396:2002)	252 kW	338 hp
Bore	115 mm	4.5 in
Stroke	1149 mm	45.2 in
Displacement	9.3 L	567.5 in ³
No Engine Derating Below	914 m	3,000 ft
Peak Engine Torque Gross (SAE J1995:2014)	1729 N·m	1,275 lbf·ft
Peak Engine Torque Net (SAE J1349:2011)	1712 N·m	1,263 lbf·ft
Peak Engine Torque Speed	1,200 rpm	

- Advertised power is tested at 1,700 rpm.
- Net power available at the flywheel when the engine is equipped with alternator, air cleaner, muffler, and fan at minimum speed.
- Net power when the fan is at maximum speed is 249 kW (334 hp) per the SAE reference conditions.
- Meets U.S. EPA Tier 4 Final, either EU Stage V or EU Stage IV*, Japan 2014, and Korea Tier 4 Final emission standards.
- DEF used in Cat SCR systems must meet the requirements outlined in ISO 22241-1:2006. ISO 22241-1 requirements are met by many brands of DEF, including those that carry the AdBlue or API certifications.

*Stage IV engines comply with the transition provisions of the EU nonroad emission regulation.

WEIGHTS		
Rated Payload	24 tonnes	26.5 tons

BODY CAPACITIES		
Heaped SAE 2:1	15 m ³	19.6 yd ³
Struck	11 m ³	14.4 yd ³

TRANSMISSION		
Forward 1	8.1 km/h	5.0 mph
Forward 2	15.2 km/h	9.4 mph
Forward 3	23.2 km/h	14.4 mph
Forward 4	35.5 km/h	22.1 mph
Forward 5	49.4 km/h	30.7 mph
Forward 6	58.4 km/h	36.3 mph
Reverse 1	8.9 km/h	5.5 mph

STANDARDS	
Brakes	ISO 3450:2011
Cab/FOPS	ISO 3449:2005 Level II
Cab/ROPS	ISO 3471:2008
Steering	ISO 5010:2019

AIR CONDITIONING SYSTEM
The air conditioning system on this machine contains the fluorinated greenhouse gas refrigerant R134a (Global Warming Potential = 1430). The system contains 1.1 kg of refrigerant which has a CO ₂ equivalent of 1.716 metric tonnes.

SOUND LEVELS	
Interior Cab	69±2 dB(A)

- The declared dynamic operator sound pressure level is 69±2 dB(A) when ISO 6396:2008 is used to measure the value for an enclosed cab. The measurement was conducted at 70% of the maximum cooling fan's speed. The sound level may vary at different cooling fan speeds. The measurement was conducted with the cab doors and the cab windows closed. The cab was properly installed and maintained.
- Hearing protection may be needed when operating with an open operator station and cab (when not properly maintained or doors/windows open) for extended periods or in noisy environments.

OPERATING WEIGHTS		
Front Axle – Empty	14 050 kg	30,974 lb
Center Axle – Empty	4646 kg	10,242 lb
Rear Axle – Empty	4426 kg	9,757 lb
Total – Empty	23 122 kg	50,975 lb
Front Axle – Rated Load	2500 kg	5,511 lb
Center Axle – Rated Load	10 750 kg	23,699 lb
Rear Axle – Rated Load	10 750 kg	23,699 lb
Total – Rated Load	24 000 kg	52,910 lb
Front Axle – Loaded	16 549 kg	36,484 lb
Center Axle – Loaded	15 397 kg	33,944 lb
Rear Axle – Loaded	15 176 kg	33,457 lb
Total – Loaded	47 122 kg	103,886 lb

BODY PLATE THICKNESS		
Front Plate	7 mm	0.28 in
Base Plate	13 mm	0.51 in
Side Plates	11 mm	0.43 in
Scow Plate	13 mm	0.51 in

SERVICE REFILL CAPACITIES		
Fuel Tank	412.0 L	91.0 gal
Cooling System	83.0 L	18.0 gal
Steering/Hoist Hydraulic System	110.0 L	24.0 gal
Engine Crankcase	38.0 L	8.0 gal
Transmission	47.0 L	10.0 gal
OTG	24.0 L	5.0 gal
Final Drives (each)	7.5 L	1.6 gal
Axles (each)	26/28/26 L	6/8/08 gal
Diesel Exhaust Fluid (DEF) Tank	20.0 L	4.0 gal

BODY HOIST	
Raise Time	10 Seconds
Lower Time	8 Seconds

STANDARD & OPTIONAL EQUIPMENT

Standard and optional equipment may vary. Consult your Cat dealer for details.

OPERATOR ENVIRONMENT	STANDARD	OPTIONAL
Air conditioning with R134a refrigerant	•	
Combined gear selection and hoist control lever	•	
Liquid Crystal Display (LCD)	•	
Mirrors: extensive arrangement for improved visibility	•	
Mirrors, heated motorized		•
Machine operation monitoring system	•	
Radio, Bluetooth stereo system		•
Seats: operator – fully adjustable, air suspension, retractable lap belt; trainer – padded with retractable lap belt	•	
Seat, heated/cooled		•
Seat belt, four-point		•
Secondary steering – electro hydraulic	•	
Sun visor	•	
Tilt and telescopic steering wheel	•	
Touchscreen display incorporating the rearview camera video feed	•	
Windshield wiper and washer, two speed, intermittent (front)	•	
TECHNOLOGY	STANDARD	OPTIONAL
Machine Security System (MSS)		•
Cat Production Measurement payload monitoring system		•
PLE641 (cellular) dependent on location and licensing agreement	•	
Cat Detect with Stability Assist	•	
PLE631 (satellite)		•
ELECTRICAL AND LIGHTING	STANDARD	OPTIONAL
Batteries (two) maintenance free	•	
Cold weather start attachment		•
Engine block heater		•
Ether start		•
Electrical system: 24-volt, 5A 24- to 12-volt converter	•	
Flashing LED beacon		•
Lighting systems: cab interior, two head lamps, two width marker, two reversing, work light/cab access light, two stop/tail lights, front and rear direction indicators	•	
Main disconnect switch	•	
Roof mounted High Intensity Discharge (HID) work lights		•

POWER TRAIN	STANDARD	OPTIONAL
Auto shift six-speed forward and single speed reverse transmission	•	
Cat C9.3 engine	•	
CX31 transmission	•	
Cat Clean Emissions Module (CEM) and exhaust aftertreatment package	•	
Differentials: standard with automatic clutched inter- and cross-axle differential locks	•	
Dual circuit oil immersed, enclosed brakes – all wheels	•	
Hydraulic retarder	•	
Three axle, six-wheel drive	•	
SAFETY	STANDARD	OPTIONAL
Reverse alarm	•	
Rearview camera	•	
ROPS/FOPS cab	•	
GUARDS	STANDARD	OPTIONAL
Axle	•	
Crankcase	•	
Radiator	•	
Rear window	•	
OTHER	STANDARD	OPTIONAL
Auto lube installation for automatic greasing of bearings		•
Bare chassis (no body) standard wheel base		•
Body liners		•
Cold weather coolant -51°C (-60°F)		•
Exhaust heated body		•
Fast fuel fill		•
Fuel additive – anti-waxing		•
Mud flaps: wheel arch and body mounted with transportation tiebacks	•	
Scissor tailgate		•
S•O•S SM sampling valves	•	
Sound suppression (standard in EFTA*)	•	
Sound suppression (optional outside EFTA*)		•
Tires, six 23.5R25	•	
Vandalism protection: lockable caps	•	
Wheel chocks		•

* EFTA countries are EU countries plus Iceland, Norway, Lichtenstein, and Switzerland.

For more complete information on Cat products, dealer services and industry solutions, visit us on the web at www.cat.com.

VisionLink® is a trademark of Trimble Navigation Limited, registered in the United States and in other countries.

Materials and specifications are subject to change without notice. Featured machines in photos may include additional equipment. See your Cat dealer for available options.

© 2020 Caterpillar. All Rights Reserved. CAT, CATERPILLAR, LET'S DO THE WORK, their respective logos, S•O•S, Product Link, "Caterpillar Corporate Yellow", the "Power Edge" and Cat "Modern Hex" trade dress as well as corporate and product identity used herein, are trademarks of Caterpillar and may not be used without permission.
www.cat.com www.caterpillar.com

AEXQ2771-01
Build Number: 04A
(N Am, Eur, Aus-NZ, Jpn)

