

D4

TRACK-TYPE TRACTOR



Net Power (2,100 rpm)

ISO 9249/SAE J1349

97 kW (130 hp)

ISO 9249/SAE J1349 (DIN)

132 mhp

Operating Weight

D4

13 272 kg (29,259 lb)

D4 LGP

14 008 kg (30,882 lb)

Cat® C4.4 Engine meets U.S. EPA Tier 4 Final/EU Stage V/Japan 2014/Korea Tier 4 Final emission standards.



THE NEW CAT[®] D4

SEE A BETTER BOTTOM LINE

The versatile new Cat[®] D4 Dozer offers the power and precision to get jobs done quickly, plus gives you up to 30 percent more visibility in front of the blade. Easy-to-use technology features help you get more quality work done in less time. Fuel efficiency and service improvements help reduce your operating costs.



GAIN THE COMPETITIVE EDGE

An unprecedented choice of technology features help make your job easier.

- + Grade technologies help you hit target grade faster and more accurately. Save time and material, plus help operators of varied experience levels work more efficiently.
- + Link technologies connect you to your machines to help save time and money on service, not to mention added convenience.
- + Operator assist features work behind the scenes to help make machine operation easier.

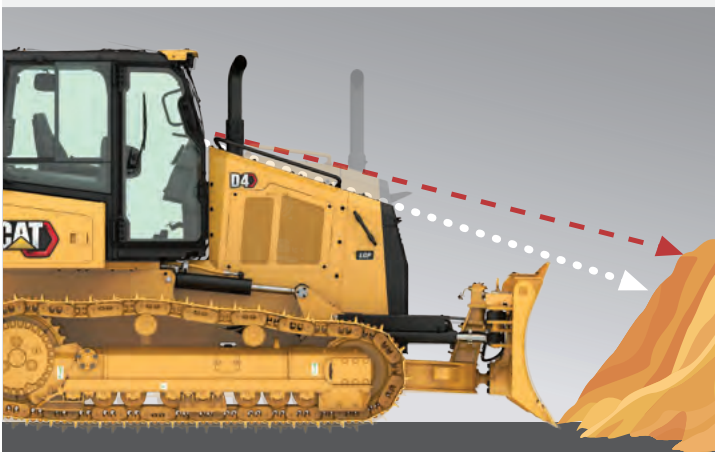


A BETTER VIEW

Lower sloping hood line = **about 30% better visibility** to the work area in front of the blade.

UP TO 30% BETTER FORWARD VISIBILITY

Work more efficiently – lower sloping hood line for better visibility to the area in front of the blade.



SHORTER SIGHT LINE GETS YOU ABOUT **40% CLOSER TO THE PILE** FOR FASTER CYCLE TIMES.

UP TO 50% MORE PRODUCTIVITY WITH CAT TECHNOLOGY

Industry leading technology choices to help operators of varied experience levels work better, faster and safer.

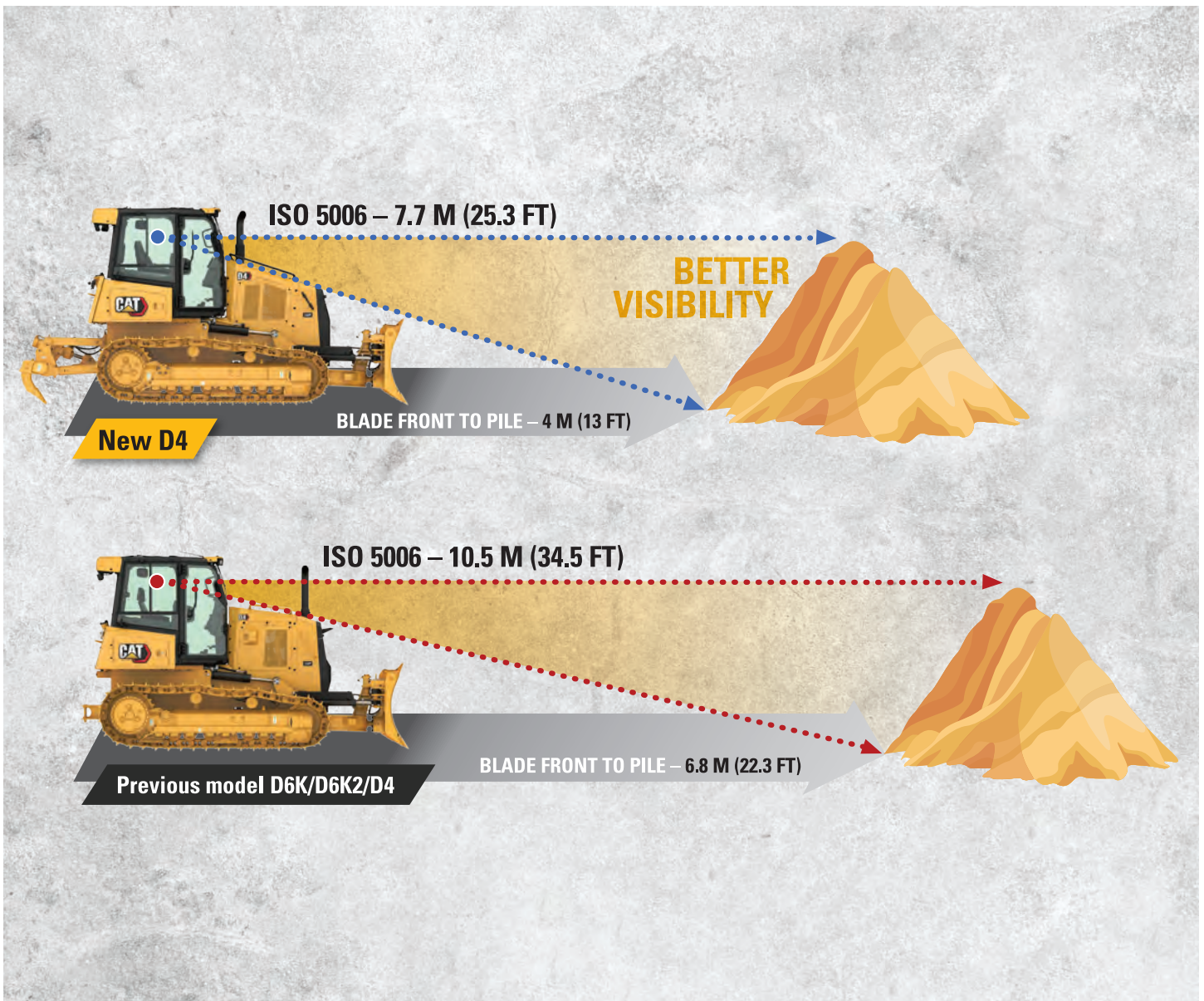
LOWER OPERATING COSTS

Lower maintenance costs, longer service intervals help you save time and money.

NEW D4▶
PREVIOUS MODEL D6K/D6K2/D4▶

BETTER SIGHT LINES ENJOY THE VIEW

Get a better view of the work at hand with a lower sloping hood line that gives you up to 30 percent better visibility to the area in front of the blade.



WORK FASTER

Shorter sight lines mean you won't have to back up as much to get a full view of the material. With the visual distance between the front of your blade and the pile shortened by about 40 percent, you'll spend less time in reverse and get the job done faster.

POWERFUL

Cat C4.4 engine with twin turbochargers combined with a hydrostatic transmission gives you excellent fuel efficiency and the most power-dense drive train in its size class.

AGILE

Superior maneuverability, fast steering response gives you the agility to get the job done quickly.



VERSATILE

Variable Pitch Angle Tilt (VPAT) blade gives you the width and capacity to move material, as well as the finesse you need for smooth finish grades. Foldable VPAT option available for narrower transport width.

BALANCED

The undercarriage design, with eight bottom rollers and two carrier rollers, is optimized for smooth finish grading and a better ride, even at faster grading speeds.

GAIN THE COMPETITIVE EDGE



CAT TECHNOLOGY IS LIKE HAVING A **COACH IN THE CAB**

PLAY YOUR BEST

Optimal efficiency,
fewer operator
inputs



KNOW THE SCORE

Real-time Feedback

NO FOUL

Save rework, time, materials

An unprecedented selection of technology choices help you make the most of your equipment investment.

- + Grade technology options help operators of varied skill levels hit target grade faster and more accurately.
- + Operator assist technologies work behind the scenes to help make machine operation easier.
- + Cab offers optimal interior mounting locations that make it simple to install the grade control system of your choice.
- + All Cat Grade systems are compatible with radios and base stations from Trimble, Topcon and Leica.
- + Link technologies, remote services and tools like the Cat App help connect you to your equipment to help save time and money on service and maintenance.

CAT GRADE TECHNOLOGY

BOOST YOUR PRODUCTIVITY



NO GPS SIGNAL? NO PROBLEM

Cat Grade with Slope Assist™ automatically maintains operator's pre-established blade position without a GPS signal. Put it to work building pads, creating simple design plans on-the-go or working where GPS is unavailable. Slope Assist works seamlessly alongside 3D GPS systems.

FIRST PASS TO FINISH GRADE

Factory-integrated Cat Grade with 3D uses a GPS signal to automatically adjust blade movements – both lift and tilt – as you follow the design. Save time, labor and materials on all phases of the job. The friendly 10-inch (254 mm) touchscreen grade display works like a smart phone, so it is easy for operators to pick up quickly. Antennas and receivers are housed in a low-profile roof-mounted spoiler.

READY WHEN YOU ARE

With Attachment Ready Option (ARO), your dozer comes from the factory ready for simple installation of a grade control system. ARO is bundled with Slope Assist and the standard technology features to help operators get more done in less time. You will also find optimal mounting locations in the cab to make it easier to utilize your technology systems.

Already invested in a grade infrastructure? You can install grade systems from Trimble, Topcon and Leica onto the machine.

OPERATOR HELPERS

FOR TOP RESULTS



SMOOTH OPERATOR

Stable Blade makes it easier to get smoother surfaces faster when operating manually. Works seamlessly with operator blade inputs to help reduce imperfections and produce a smoother surface.

MAKE THE MOST OF EVERY PASS

AutoCarry automates blade lift to help you get more consistent blade loads with each pass and reduce track slip.

Note: Grade with 3D package required.

KEEP PUSHING FORWARD

Save time, effort, fuel and track wear. If high track slip is detected, Traction Control temporarily reduces track power so the operator can adjust blade load and limit the track slip.

HARNESS THE POWER

Power Turn provides power to each track to allow dozer to carry heavy loads around turns.

CAT LINK TECHNOLOGY

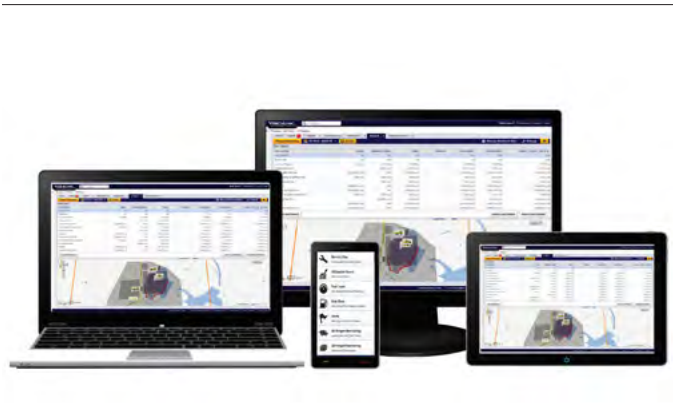
TAKES THE GUESSWORK OUT OF MANAGING YOUR EQUIPMENT

Cat Link telematics technology helps take the complexity out of managing your jobsites – by gathering data generated by your equipment, materials and people – and serving it up to you in customizable formats.



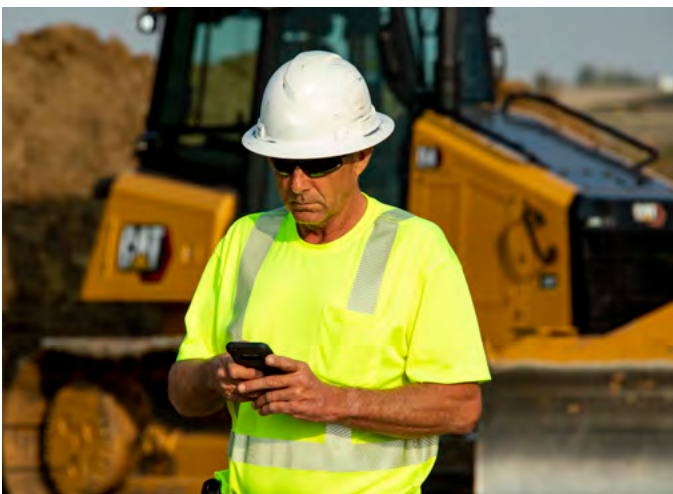
CAT PRODUCT LINK™

Product Link™ collects data automatically and accurately from your assets – any type and any brand. Information such as location, hours, fuel usage, productivity, idle time, maintenance alerts, diagnostic codes and machine health can be viewed online through web and mobile applications.



VISIONLINK®

Access information anytime, anywhere with VisionLink® – and use it to make informed decisions that boost productivity, lower costs, simplify maintenance and improve safety and security on your jobsite. With different subscription level options, your Cat dealer can help you configure exactly what you need to connect your fleet and manage your business without paying for extras you don't want. Subscriptions are available with cellular or satellite reporting or both.



REMOTE SERVICES

The Cat App helps you manage your assets – at any time – right from your smartphone. See fleet location and hours, get critical required maintenance alerts and even request service from your local Cat dealer.

- + **Remote Flash** – get software updates to one or more machines remotely.
- + **Remote Grade** lets you wirelessly manage site plans via Trimble Connect Services.
- + **Operator ID** lets you track machine operation by individual operator using the main display and Product Link.

COME ON IN AND MAKE YOURSELF COMFORTABLE

Updated cab offers more comfort and convenience for long days in the seat. Pair that with added visibility along the lower sloping hood line, and you have an operator environment that helps you get the job done.



STAY IN TOUCH

10-inch (254 mm) touchscreen main display is easy to use with a great view of machine settings and features. The standard high-definition rearview camera shows prominently in the display and includes backup lines to guide you.

WORK SPACE

New, more comfortable seat offers improved suspension and multiple adjustments for personalized comfort. Plus, enjoy additional storage spaces throughout the cab.

REDUCED EFFORT

Bi-directional control lets you preselect forward/reverse gears for reduced effort and to match your application. Save the settings as operator profile for even more convenience.



EQUIPPED FOR THE JOB

FIT THE WAY YOU WORK

Choose from undercarriage, track shoe, guarding and attachment options to ideally outfit your dozer for the type of work you do.

HEAVY DUTY/FORESTRY

You can equip your D4 with a variety of factory options to provide added protection in heavy-duty applications like forestry and land clearing. Choose individual components, sweeps/screens, protection packages and even a heavy-duty cab with polycarbonate windows.



SAVE TIME, SAVE MONEY

BECAUSE UPTIME COUNTS

EASY SERVICE ACCESS

Large engine compartment door gives you easy ground-level access to service and maintenance points. The lower panel can be removed without tools. The trunnion grease point can now be reached without bending down. Longer drawbar platform gives you more convenient fuel fill/rear camera cleaning access. Optional ground level fast fuel fill and shovel bracket add to overall convenience.

OPERATING COST SAVERS

Eco modes optimize engine speed, while maintaining ground speed and power, to save you fuel in lighter blade load applications like finish grading. Efficiency features reduce engine speed when idling, or shut the machine down after a specified time, to further save fuel and meet idling regulations. Efficient cooling package has better air flow, helping to reduce fan speed and save even more fuel in cooler conditions/lighter applications.

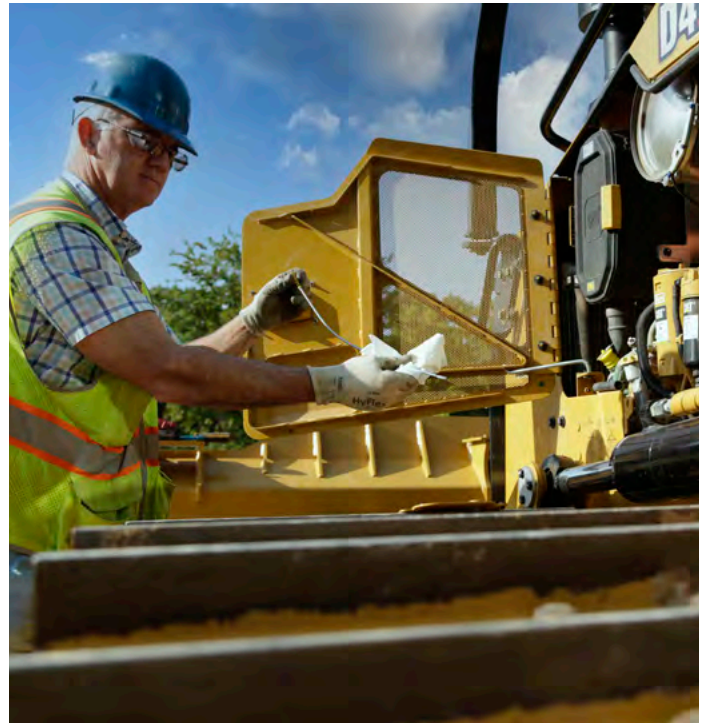
NEW UNDERCARRIAGE CHOICE

New Cat Abrasion™ undercarriage is your lowest cost-per-hour solution for high abrasion and low impact jobsites. The new design offers double the seal life and eliminates bushing turns, reducing your costs up to 50 percent per hour compared to traditional undercarriage.

SPEND LESS ON MAINTENANCE

Engine oil/engine oil filter service interval has been extended to 1,000 hours.* Longer service intervals on the air cleaner and Diesel Exhaust Fluid (DEF) pump filter help save time, too. LED lights offer up to six times the life of halogen to save on parts cost.

*First change at 500 hours. Scheduled Oil Sampling (S-O-SSM) required. Please refer to Operation and Maintenance Manual (OMM) for details.



MORE THAN MACHINES

BUILT AROUND YOUR SUCCESS

When you buy Cat equipment, you get so much more than the machine. You also get the support of a best-in-class dealer network, backed by a range of flexible solutions, technology, tools and more.



CUSTOMER VALUE AGREEMENTS

A Customer Value Agreement (CVA) from your Cat dealer helps you do more and worry less. A CVA simplifies machine ownership and maintenance, adds the security of expert dealer support and gives you the peace of mind from effective equipment health management.

REPAIR OPTIONS

A broad range of repair options give you choices that work with your needs, budget and timeline. Every repair is performed by expert Cat technicians. You'll receive smart repair advice, a timely, accurate quote and service that gets your machine back into action quickly.

GENUINE CAT PARTS

Genuine Cat Parts deliver the highest level of reliability and productivity. Order direct from your Cat dealer or shop online at parts.cat.com or myparts.cat.com.

FINANCIAL SERVICES

Count on Cat Financial to provide the best finance and extended protection solutions for your business. For more than 30 years, we have helped our customers succeed through financial service excellence.

GET BACK TO WORK

Services to help you save time, save money and get back on the job.

CAT INSPECT

Access your equipment data on your mobile device. This easy-to-use app lets you capture inspection data and integrates with your other Cat data systems, so you can keep a close eye on your fleet.

HYDRAULICS AND HOSE

Whether you choose new, Reman, exchange or rebuilt hydraulic components, you'll get expert diagnostics, testing and contamination control. Cat Hose Service offers hoses and couplings for most makes and models.

CERTIFIED REBUILD

Get a full second machine life at a fraction of the cost of buying new. With upgraded features, safety enhancements and the latest technologies, your old machine will perform even better than it did when it rolled off the line.

TECHNICAL SPECIFICATIONS

See cat.com for complete specifications.

| ENGINE | | |
|------------------------------|--|-----------------------|
| Engine Model | Cat C4.4 | |
| Emissions | U.S. EPA Tier 4 Final/EU Stage V/ Japan 2014/Korea Tier 4 Final | |
| Build Number | 16A | |
| Transmission Type | Hydrostatic | |
| Net Power (2,100 rpm) | | |
| ISO 9249/SAE J1349 | 97 kW | 130 hp |
| ISO 9249/SAE J1349 (DIN) | 132 mhp | |
| Displacement | 4.4 L | 268.5 in ³ |

- Net power available at the flywheel when the engine is equipped with fan, air cleaner, aftertreatment, and alternator with engine speed at 2,100 rpm.
- Advertised power is tested per the specified standard in effect at the time of manufacture.
- The air conditioning system on this machine contains the fluorinated greenhouse gas refrigerant R134a (Global Warming Potential = 1430). The system contains 1.6 kg of refrigerant which has a CO₂ equivalent of 2.288 metric tonnes.

| OPERATING WEIGHT | | |
|------------------|-----------|-----------|
| D4 | 13 272 kg | 29,259 lb |
| D4 LGP | 14 008 kg | 30,882 lb |

| SERVICE REFILL CAPACITIES | | |
|---------------------------|-------|--------|
| Fuel Tank | 260 L | 69 gal |
| DEF Tank | 19 L | 5 gal |

| BLADES | | | | |
|------------|---------------------|----------------------|---------|---------|
| Blade Type | VPAT/Foldable VPAT | | | |
| | Capacity | | Width | |
| VPAT | 3.26 m ³ | 4.26 yd ³ | 3196 mm | 10.5 in |
| LGP VPAT | 3.81 m ³ | 4.98 yd ³ | 3682 mm | 12.0 in |

- VPAT foldable blades have the same capacity and width as the blades.

| DIMENSIONS | | | | |
|---|------------------------------|---------|---------|---------|
| Width of Tractor | D4 | | D4 LGP | |
| | Standard Shoes without Blade | 2330 mm | 92 in | 2760 mm |
| Standard Shoes with VPAT Blade Angled 25° | 2896 mm | 114 in | 3337 mm | 131 in |
| Standard Shoes with Foldable Blade in Transport Position | 2364 mm | 93 in | 2850 mm | 112 in |
| Machine Height from Tip of Grouser – ROPS Cab | 2965 mm | 117 in | 2965 mm | 117 in |
| Width of Standard Shoe | 560 mm | 22 in | 760 mm | 30 in |
| Length of Track on Ground | 2653 mm | 104 in | 2653 mm | 104 in |
| Length of Basic Tractor (with C-Frame and drawbar) | 4618 mm | 181 in | 4618 mm | 181 in |
| With the Following Attachments: | | | | |
| VPAT Blade, Straight | 5000 mm | 196 in | 5000 mm | 196 in |
| VPAT Blade, Angled 25° (Standard and Foldable) | 5630 mm | 221 in | 5630 mm | 221 in |
| Ground Clearance from Ground Face of Shoe (per SAE J1234) | 350 mm | 14 in | 350 mm | 14 in |
| Ground Pressure (ISO 16754) | 40.5 kPa | 5.9 psi | 31 kPa | 4.5 psi |

Note: all weights and dimensions with Cat Abrasion undercarriage.

STANDARD & OPTIONAL EQUIPMENT

Standard and optional equipment may vary. Consult your Cat dealer for details.

| POWER TRAIN | STANDARD | OPTIONAL |
|--|----------|----------|
| Cat C4.4 diesel engine | • | |
| Air cleaner with integrated precleaner, dust ejector and under hood air intake | • | |
| Auto engine speed control | • | |
| Electric fuel pump | • | |
| Hydrostatic, infinite variable speed transmission | • | |
| Precleaner with turbine | | • |
| Auto reversing fan | | • |
| OPERATOR ENVIRONMENT | STANDARD | OPTIONAL |
| Standard ROPS/FOPS cab | • | |
| Comfort cab package | | • |
| Heavy duty cab package | | • |
| Integrated air conditioning | • | |
| Air-suspension cloth seat | • | |
| Adjustable armrests | • | |
| 10-in (254 mm) touchscreen display | • | |
| Rear-vision camera | • | |
| Electronically programmable speed selector | • | |
| Electronic engine air cleaner service indicator | • | |
| Entertainment radio ready | • | |
| Radio, AM/FM/AUX/USB Bluetooth® | | • |
| CAT TECHNOLOGY | STANDARD | OPTIONAL |
| Standard | | |
| – Stable Blade | • | |
| – Traction Control | | |
| – Slope Indicate | | |
| ARO with Assist (Grade Ready + Assist Features) | | • |
| – Slope Assist | | |
| – Attachment Ready Option (ARO) | | |
| – Third Party Grade Control Ready | | |
| – Standard Features | | |
| Cat Grade with 3D | | |
| – Full-color 10-inch (254 mm) touchscreen grade display | | • |
| – Grade receivers and antennas | | |
| – AutoCarry | | |
| – Grade Software Enabled Attachment (SEA) | | |
| – ARO with Assist features | | |
| Compatibility with radios and base stations from Trimble, Topcon, and Leica | • | |
| Capability to install 3D grade systems from Trimble, Topcon, and Leica | • | |
| Product Link – cellular | • | |
| Product Link – dual cellular/satellite | | • |
| Remote Flash/Troubleshoot | • | |

| ELECTRICAL | STANDARD | OPTIONAL |
|--|----------|----------|
| 105 amp brush-type alternator (24 volt) | • | |
| Backup alarm | • | |
| Diagnostic connector | • | |
| Integrated halogen lights – 4 front, 2 rear | • | |
| 6 LED lights | | • |
| 8 LED lights – premium | | • |
| Flashing beacon | | • |
| UNDERCARRIAGE | STANDARD | OPTIONAL |
| Heavy Duty undercarriage | • | |
| Cat Abrasion undercarriage | | • |
| Lifetime lubricated track rollers (8 + 2 carrier rollers) and idlers | • | |
| Track guiding guards – full, center, front/rear | | • |
| SERVICE AND MAINTENANCE | STANDARD | OPTIONAL |
| Extended service intervals (1,000 hours* engine oil and filter, 1,000 hours power train) | • | |
| Ecology drains | • | |
| Fast fill ready | | • |
| Bio hydraulic oil | | • |
| Cold weather package (120V or 240V) | | • |
| Shovel mounting bracket | | • |
| High speed oil change | | • |
| BLADES | STANDARD | OPTIONAL |
| VPAT blade | • | |
| Folding VPAT blade | | • |
| Manual blade pitch | • | |
| Powered blade pitch | | • |
| ATTACHMENTS | STANDARD | OPTIONAL |
| Ripper Ready package | | • |
| Winch ready | | • |
| Dual Ripper/Winch Ready package | | • |
| Winch (dealer installed) | | • |
| Ripper with curved or straight shanks | | • |
| Drawbar | | • |
| Rear counterweight | | • |
| Front pull device | • | |
| Protection packages | | • |
| Rear screen | | • |

*S.O.S sampling required. Please consult Operation and Maintenance Manual (OMM) for complete service information.

Not all features are available in all regions. Please check with your local Cat dealer for specific offering availability in your area.
For additional information, refer to the Technical Specifications brochures for the D4 available at www.cat.com or your Cat dealer.

For more complete information on Cat products, dealer services and industry solutions, visit us on the web at www.cat.com.

© 2021 Caterpillar. All Rights Reserved.

VisionLink is a trademark of Trimble Navigation Limited, registered in the United States and in other countries.

Materials and specifications are subject to change without notice. Featured machines in photos may include additional equipment. See your Cat dealer for available options.

CAT, CATERPILLAR, LET'S DO THE WORK, their respective logos, Product Link, Slope Assist, S-O-S, Abrasion, "Caterpillar Corporate Yellow", the "Power Edge" and Cat "Modern Hex" trade dress as well as corporate and product identity used herein, are trademarks of Caterpillar and may not be used without permission.

www.cat.com www.caterpillar.com

AEXQ3233-01 (06-2021)
Replaces AEXQ3233
Build Number: 16A
(Aus-NZ, Eur, N Am, Japan,
S. Korea, Turkey)

